

Jeep Wrangler JK Unlimited – 2007 to 2018

Overview

This installation can be accomplished by one person with basic tools and limited mechanical experience. In addition, representative installation videos are available on Diabolical's website under installation videos:

<https://shop.diabolicalinc.com/pages/installation> Or YouTube:

https://www.youtube.com/results?search_query=diabolical+slipstream

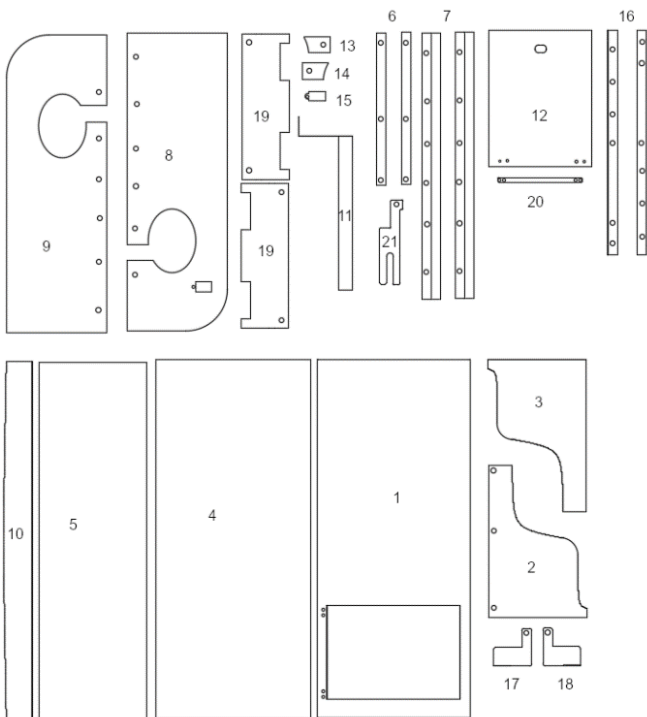
These instructions assume that the hardtop or soft-top are removed from the Jeep.

Required Tools:

Tool	Size	Alternate Tools	Size
Sockets (SAE) 3/8" Drive	5/16, 7/16, 3/4	Open/Box End Wrench	5/16, 7/16, 3/4
Sockets (mm) 3/8" Drive	10	Open/Box End Wrench	10
Ratchet	3/8" Drive		
Extension	3/8" Drive 6"		
Scissors		Utility Knife/Exacto/Razor	
Torx Key Bits/Drivers	T-30, T-40, T-45		
Plastic Trim removal tools		Small Flat screwdriver, cardboard	

Tabletop Assembly

We suggest you use a few folding tables covered in towels or cloth (to avoid scratching) layout all your parts and pieces, then assemble the pieces on the table prior to installing them in the JKU.



ITEM	QTY	PART NUMBER
1	1	CENTER WALL
2	1	RIGHT WING WALL
3	1	LEFT WING WALL
4	1	LARGE FOLDING TOP HALF
5	1	SMALL FOLDING TOP HALF
6	2	VERTICAL FRAME
7	2	SIDE FRAMES
8	1	LEFT WINGSKIN
9	1	RIGHT WINGSKIN
10	1	TAILSKIN
11	1	MULTIBEND BRACKET
12	1	ACCESS DOOR
13	1	RIGHT ROLLBAR FILLER
14	1	LEFT ROLLBAR FILLER
15	1	WIRE COVER
16	2	TIEDOWN RAIL
17	1	LEFT FLOOR BRACKET
18	1	RIGHT FLOOR BRACKET
19	2	FORK PLATE
20	1	ACCESS PANEL SPACER
21	1	GIRAFFE BRACKET

Foam strip

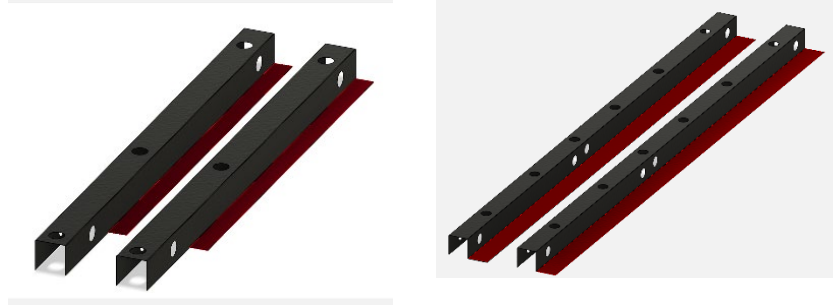
Start by gathering the 2 wing skins (8,9), the 2 vertical frames (6), and the 2 side frames (7).

Vertical Frames

Measure and cut a strip of ½ inch foam and apply it to the center wall facing edge of each vertical frame

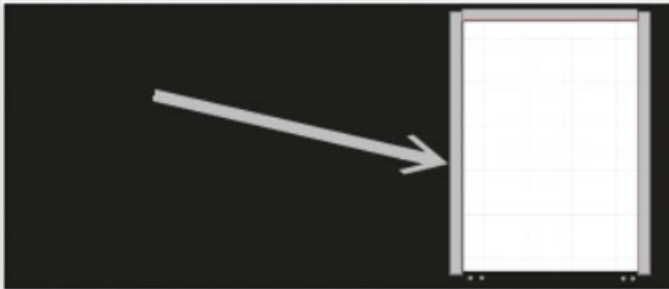
Side Frames

Measure and cut a strip of ½ inch foam and apply it to the top facing edge of each side frame



Center Wall (Access Panel)

Apply the rest of the ½ foam along the vertical sides and the top of the center wall access hole cutout.



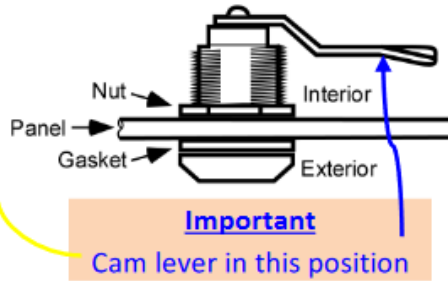
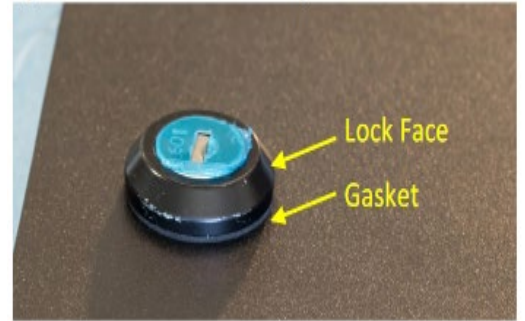
Access Panel and Spacer

1. Place the center wall flat side up and align the spacer over the 4 predrilled holes
2. Insert 2 small hinges through the spacer and wall. Secure with 5/16 washers and nuts
3. Attach the access panel on the opposite hinge and fold to cover the access hole and foam strips. Secure with 5/16 washers and nuts.



Lock Assembly

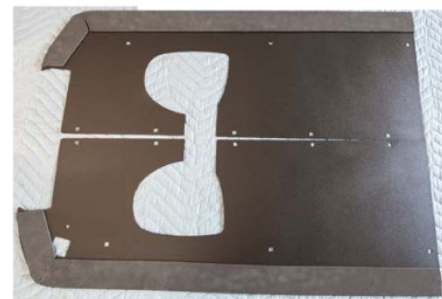
1. Use a screwdriver to remove the screw and cam lever from the lock assembly.
2. Insert the lock assembly and gasket into the hole provided for the access panel
3. Ensure the cam lever is positioned horizontal to the access panel and secure with the nut, cam lever and screw.
4. Insert key and check or proper locking orientation
5. Place the 1 X 2 magnetic strip on the inside top edge of the center wall so that the short edge aligns with the side, this acts as a strike place and catch to hold the panel securely.



Wing Skins:

The wingskins (8,9) need the 2" foam placed on the underneath side (Facing JKU tub Frame) to protect the jeep body and slipstream from rubbing.

Measure and cut the 2" X 29.5 foam along the outer edge of the wingskin, and around the tub corner, you can cut an angle or use separate pieces.



Giraffe and Multi-Bend Brackets

Multi-Bend Bracket

All kits for 2007-2010, 2011-2014, and 2018-2018 JKU are shipped with the specific “multi-bend” side bracket that mounts at the right-rear of the Jeep cargo area to the right upper frame rail.

Based on your model you may have a different version of the multi-bend bracket

- A. 2007-2010: Wranglers require that the bracket be installed behind the removable subwoofer. It bolts to floor D-ring at the tailgate end using factory hardware
- B. 2011-2014: Wranglers with the built-in subwoofer utilize a straight vertical bracket. It bolts to floor D-ring at the tailgate end using factory hardware alongside the subwoofer.
- C. 2011-2014: Wranglers without the built-in subwoofer or a 2015 to present Wrangler utilize a multi-bend bracket. It bolts to floor D-ring at the tailgate end using factory hardware.



Giraffe Bracket

The Giraffe Bracket is the drivers side bracket that will attach to the latch plate. It looks like a giraffe.

1. Place a strip of masking tape on each side of the latch, mark the factory alignment of the latch on the tape.
2. Use a Torx-45 and loosen (DO NOT REMOVE) the latch plate.
3. Insert the giraffe bracket between the spacer and latch plate with the head of the giraffe pointed at the front of the vehicle.
4. Tighten the latch plate just enough to hold the bracket, but do not fully tighten. (This will be a final adjustment)



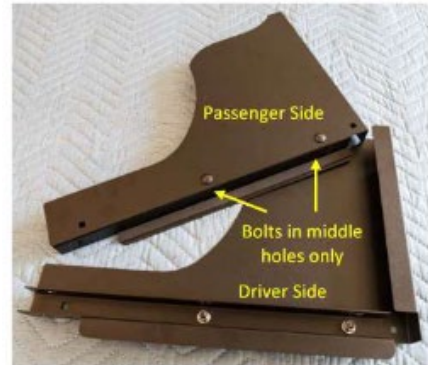
Vertical frames and Wing Wall Assembly

Gather the following pieces Left and Right Wing Walls (2,3), Both vertical frames (6), and Both Side frames (7)

1. Attach each wingwall to each vertical frame with the foam facing the front of the Jeep using the top and center holes with the supplied bolts through the wing wall and into the vertical frame. NOTE: the gap in the vertical frame should be facing downward.
2. Attach the side frames to the assembled wing walls with strips facing upward.



the foam



Wingskins and Forkplates

1. Gather the wingskins (8,9), the fork plates (19)
2. Attach each forkplate to each wingskin using the supplied bolts from the top and secured loosely with the supplied bolts and washers (NOTE: these should be loose to attach them to the frame rail and body tub later)

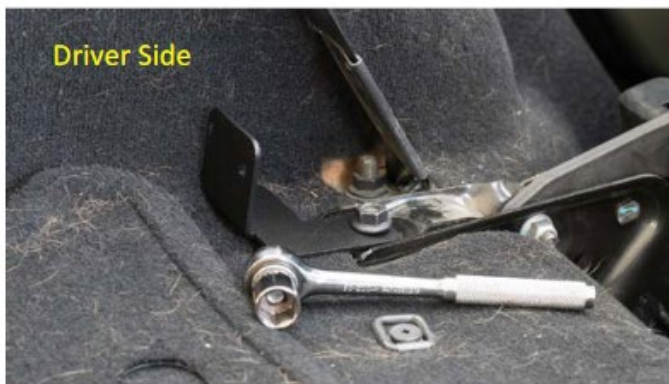


Table Top Assembly is now complete. Now we will install the slipstream in the Jeep.

Vehicle Installation

Floor Brackets

1. Fold the rear seat of the jeep to the down position and remove the 2 outside brackets on the rear of the seat using a 3/4" wrench or ratchet.
2. Place the floor brackets so that the raised flange is closest to the jeep tub.
3. Replace the 3/4" nut but do not tighten.



Frame Rails

Gather your completed frame rail assembly (Frame Rails, Vertical Rails and Wing Walls) and loosely secure them in the bottom hole of the vertical frame extending to the rear of the jeep and attach to the Giraffe/Multibend at the rear

The completed frame should look like this:



Forward Wall

Gather your assembled Center Wall (Center Wall, Access Panel) and place it against the vertical frame rails between the 2 wing walls/frame assembly. Align the holes on the wall with the holes on the vertical frame and insert 4 of the square wire lock pins in each hole. (alignment of the wall is part of final adjustment)

Wing Skins and Tie Down Rails

Gather the assembled wing skins/fork plates(8,9/17) and the tie down rails (19).

You will need to rotate and slid the wing skins around the rollbar. Once aligned, tilt the wing skin at a 45 degree angle toward the tub, this will allow you to slide the fork plate under the tub lip.

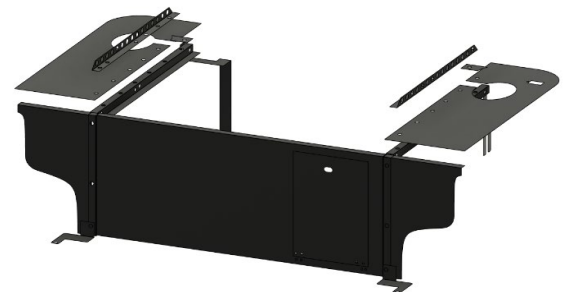
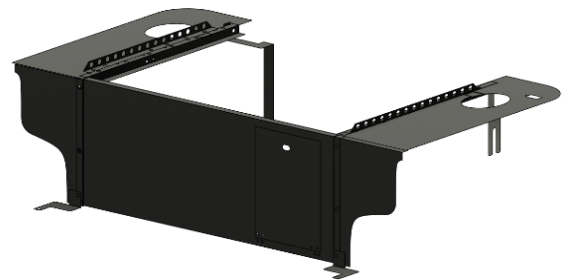
Lay the tie down rails along the wing skin/top edge (with the vertical edge closest to the rollbars) and insert carriage bolts on each hole, starting at the front wall (Note: rails do not attach to the rear wing skin hole, this allows the soft top to lay completely flat. Grab your rollbar filler plates and insert them before inserting a carriage bolt. Ensure the holes for the hard top are lined up and begin tightening the tie down rails down .

Folding Top

Gather the large and small folding tops (4,5), the large hinges, rubber seal (Seal Bag) and tail skin(10)

You can do this on a table top or in the jeep. Depending on how you want the top to sit (large side up front and smaller opening in the rear is standard, but you can reverse it if you choose)

NOTE: The folding top can be installed with the larger section towards the tailgate. In this configuration, the panel will not sit flat when folded and the rear seats are in the upright position). Standard installation is the large panel closest to the center wall/rear seats and allows for all 6 quick release pins to be installed.



Folding Top Continued

Lay the large and small top on the frame rail system, with the hinge holes adjacent to each other.

Insert the large hinges into the slotted holes and fasten with the 10mm nuts, hand tight is fine. Once secured, you can decide how you want it to open.

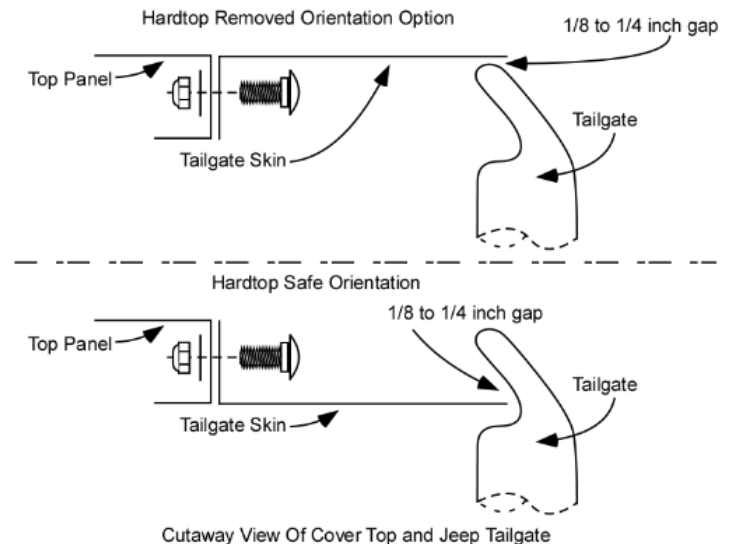
Peel and stick the rubber seal on the forward edge (Next to the center wall).

Tail skin:

There are 2 options for the tail skin, with or without hard top. You can run the "Hard Top Safe" position with anything, or for a completely topless option you can invert the tail skin for a "smooth look"

Attach the tail skin to the rear of the folding top with (3) carriage bolts and slotted holes. Raise the tail skin to the upmost position and hand tighten. (Final adjustment will be needed later) press the tail skin rubber seal on the trailing edge of the tail skin.

Insert the folding top quick release pins to secure the top



Final Adjustments

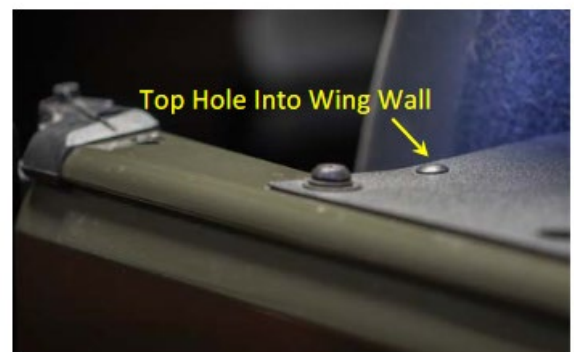
This is the most important part that people skip, and the most important part. We had you put just about every part on hand tight for a reason.

Center Wall/Wing Walls

Using some cardboard, put a small square between the center wall and the wing wall/vertical frame at the top and bottom to create a gap. Once the gap has been created, tighten the bottom vertical frame bolts as well as the floor bracket bolts and forward wing wall nuts. You can now remove the cardboard from the center wall.

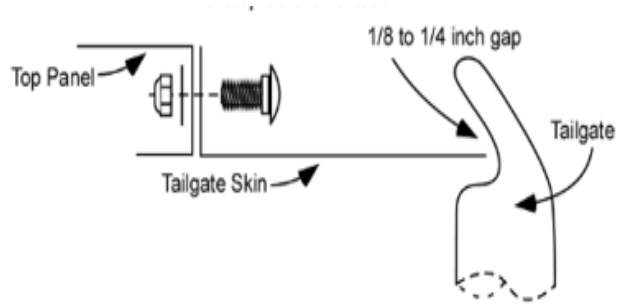
Folding Top

Set the folding wall panels into the side frames. Use a small piece of cardboard in all 4 corners to create a small gap and reducing the chance of rubbing (too tight). Insert all quick release pins with the cardboard in place. Loosen the wing skin bolts slightly to allow gap adjustments. Tighten the hinge bolts, wing skin bolts, and frame bolts. This will hold the gaps you set with the cardboard.



Tail skin/Giraffe/Multibend

The rear of the jeep only has 2 adjustment points. The giraffe and the tail skin. The multibend bracket sets the height on the passenger side.



Slowly close the tailgate, the tail skin (in the downward position) should rest in the groove of the tailgate. Start by adjusting the height of the giraffe bracket to ensure the slipstream is level across the jeep. If the tail skin is too high, lower it slightly. Or if its too low raise it slightly.

This is the hardest part of aligning the giraffe/tail skin to fit, but also the most critical. Once you have aligned the tail skin, and the tailgate closes, latches (Check your dash for a tailgate ajar light) you can tighten the giraffe head, the tail skin nuts and the latch plate.

NOTE: if you have a tailgate ajar light, ensure the latch plate is pushed forward so it pulls the tailgate into the latch close position.

Warnings

Failure to install all hardware and quick release pins as described in this instruction may cause damage to the vehicle and/or personal injury. Avoid injuries and damage by installing all parts supplied in this kit. Failure to do is the responsibility of the owner/installer and not the fault of Diabolical Inc.

Monitor the weight that is added to the top of the Slipstream. Loads differ and may require additional strapping or methods of securing to the vehicle. Owner assumes all responsibility for loading on top of the removable top and any other areas of the Slipstream system.

Make sure the hardtop bolt holes align. The assembly may require "opening" or adjustment to attain a proper fit. Soft top fitment also utilizes the hardtop bolt locations through the wing skins to the Jeep body for proper fitment, damage prevention, and security with the Slipstream system.

Final Thoughts

Thank you for your purchase of the Diabolical Inc. Slipstream Secure Storage System. Please send us pictures once installed and when in use for our website, so others can see it in use. We appreciate any social media promotion you might make and please follow us on Facebook, Instagram, and other outlets.

We value your support and look forward to extending our new products to you as we complete the engineering development and get them through production.

Alan

Owner: Diabolical Inc.