

Diabolical Inc JL Locker Installation Instructions:

Jeep Wrangler JL – 2019 to Current

Overview

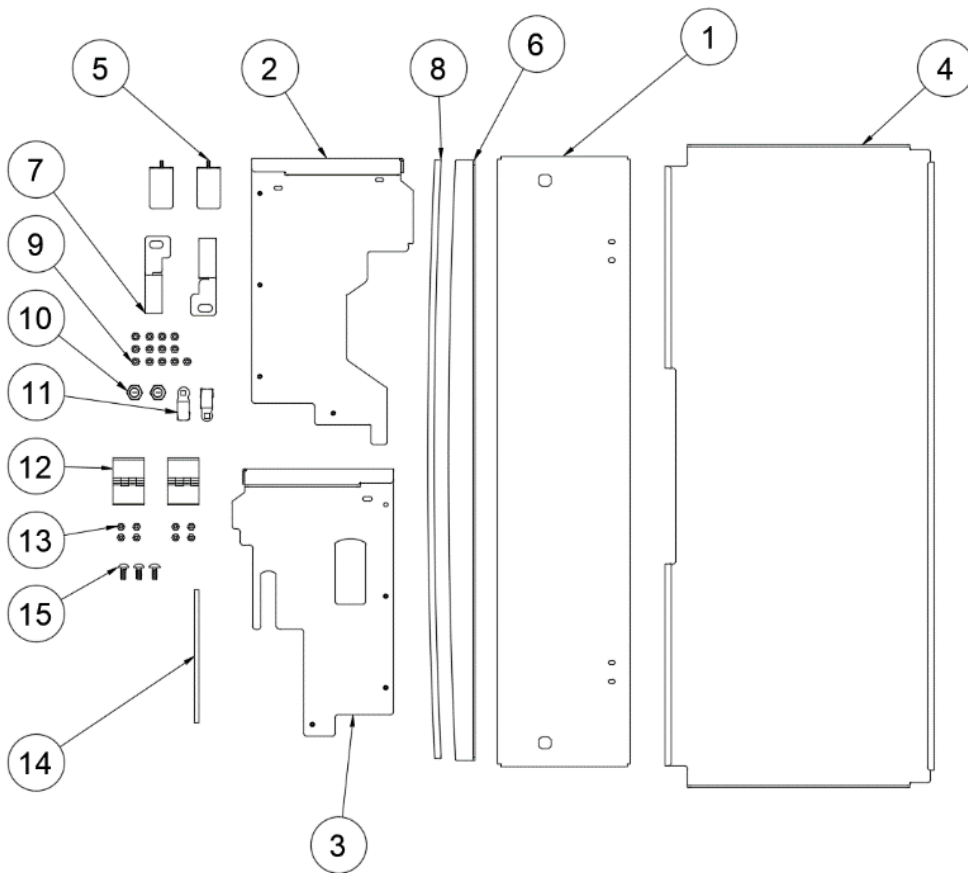
This installation can be accomplished by one person with basic tools and limited mechanical experience.

Required Tools:

Tool	Size	Alternate Tools	Size
Sockets (SAE) 3/8" Drive	7/16	Open/Box End Wrench	7/16
Sockets (mm) 3/8" Drive	10	Open/Box End Wrench	10
Ratchet	3/8" Drive		
Extension	3/8" Drive 6"		
Scissors		Utility Knife/Exacto/Razor	
Torx Key Bits/Drivers	T-30, T-40, T-45		

Tabletop Assembly:

We suggest you use a few folding tables covered in towels or cloth (to avoid scratching) layout all your parts and pieces, then assemble the pieces on the table prior to installing them in the JL.

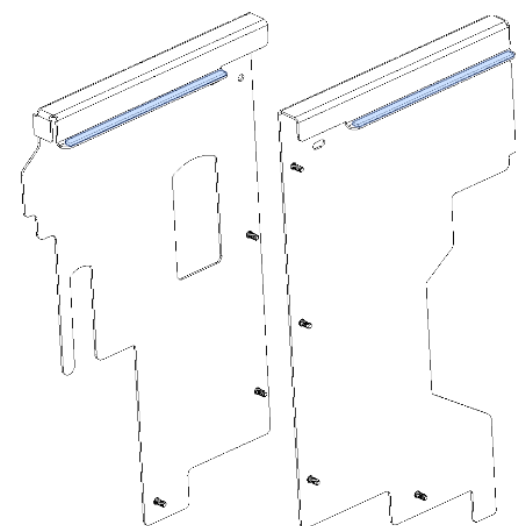


PARTS LIST		
ITEM	QTY	PART NUMBER
1	1	HINGED TOP
2	1	PASSENGER WALL
3	1	DRIVER WALL
4	1	REAR WALL
5	2	BUMP STOP
6	1	TAILSKIN
7	2	MULTIBEND
8	1	TAILSKIN GUARD
9	13	NYLOCK NUT
10	2	LOCK
11	2	LATCH
12	2	LARGE HINGE
13	8	HINGE NUT
14	1	FOAM STRIP
15	3	CARRIAGE BOLT

Foam

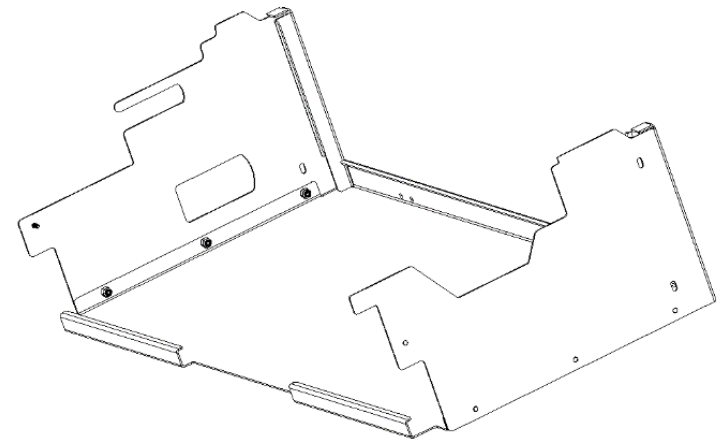
Start by gathering the 2 walls (2,3) and the small foam strips(14). Measure and cut the foam strip to the folded edge of each wall.

Peel the backing and apply the strip as shown.



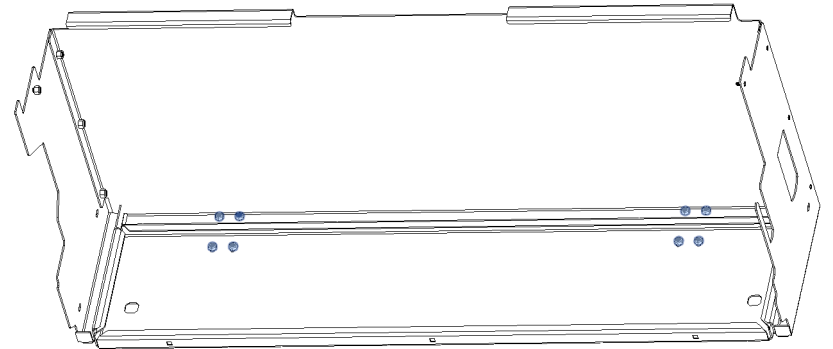
Rear Wall/Side walls

Lay the rear wall (4) flat on the table and insert the driver wall (3) PEM studs into the holes on the rear wall, secure with 3 nylock nuts; (9). Repeat the process for the passenger wall (2).



Hinged Top

Gather the hinged top (1), the Large Hinges (12) and the hinge nuts (13). Lay the hinged top upside down on the table and place a large hinge on each side through the holes provided. Lift the assembled unit on to the opposite side of the hinge, secure with the smaller hinge nuts from the hardware bag.

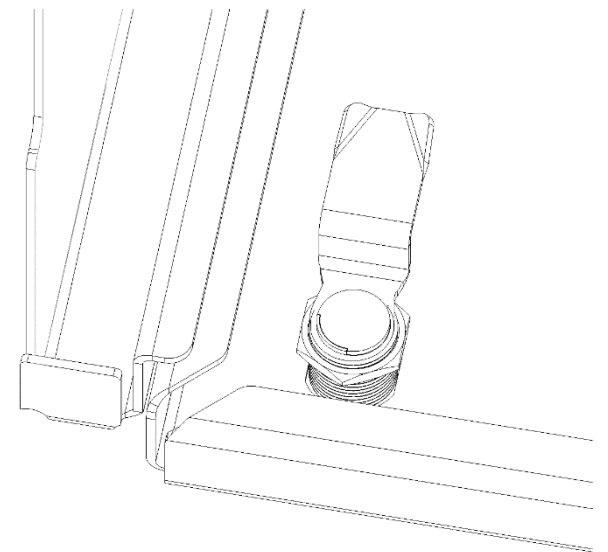


Locks and latches

Gather the 2 Locks (10) and Latches (11). Lay the assembled unit on the rear wall with the hinged top facing you.

Remove the set screw from the lock and remove the latch plate. **NOTE: there is a small O-ring beneath the latch plate, make sure it is there on assembly, these are also ¼ turn locks, they will work in 3 out of 4 positions. (4/4 is a lockout position)**

Insert the key and verify when the lock turns it will swing the latch plate to the correct side wall. Remove the lock nut and insert the lock into the hinged top, secure with the lock nut, latch plate and set screw.

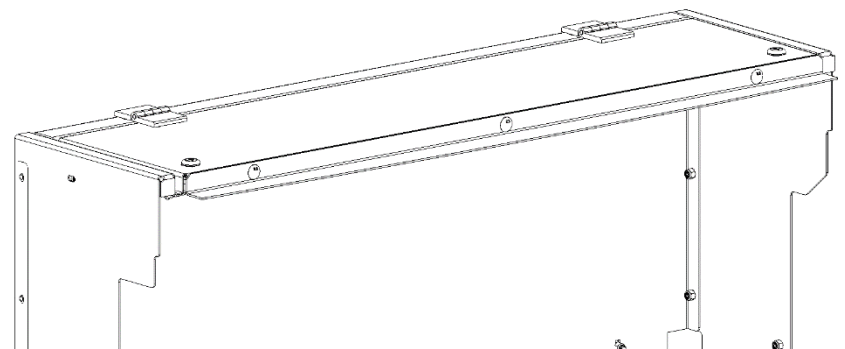


Note where the latch position is and should rotate to the side walls and move underneath the side wall bend. A magnet has been provided to go on the bottom of the frame between the frame and lock to avoid metal on metal contact. (Cut it in half and place one on each side) **NOTE: if the latch plate doesn't make contact with the magnet, remove it and hit it with a hammer to move it closer or farther away.**

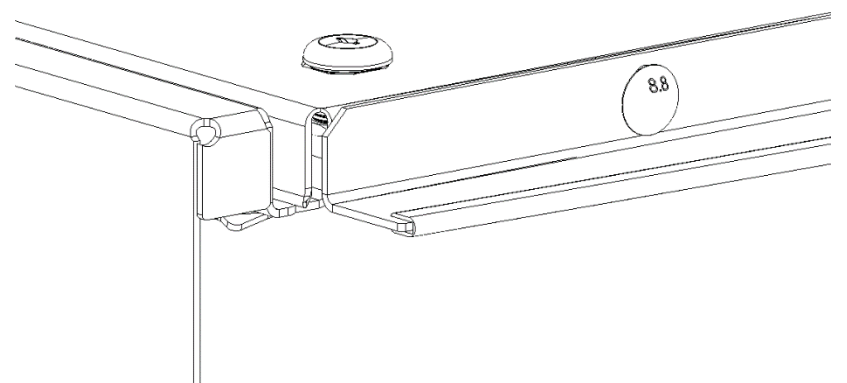
Tail Skin

Gather the tail skin (6), tail skin guard (8), 3 carriage bolts (15) and 3 Nylon lock Nuts (9).

Notice there are slotted holes in the tail skin for adjustment. Align the tail skin with the holes (in its highest position) in the hinged top and secure them with the nylock nuts.



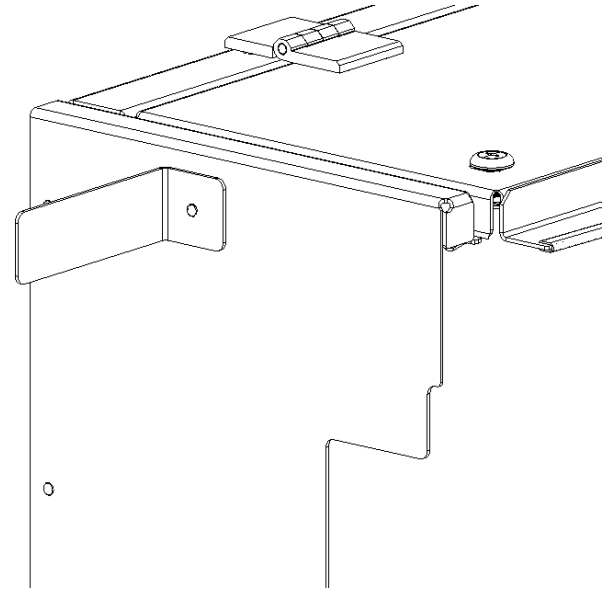
Working from one side to the other press the tailskin guard slit side against the edge of the tail skin and trim off any excess with a pair of scissors or knife.



Bump Stops

These were created to keep someone from rolling the unit forward, they rest against the roll bar plastic.

Gather the Bump Stops (5) and 2 Nylock Nuts (9). Insert the PEM stud through the wall with the bend on the forward side and secure with a nylock nut. Repeat this process on the passenger side.



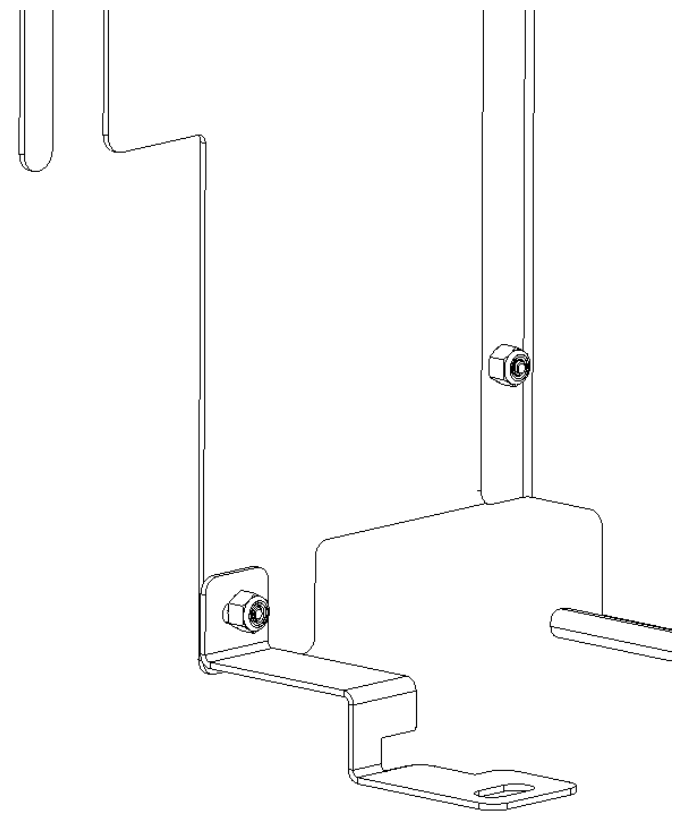
Brackets

MultiBend Brackets

The Multibend Brackets secure the (rear of the jeep) side of the locker in the rear D-Ring mounting location.

Insert the Driver multibend over the PEM stud in the drivers side wall as shown and secure it with a nylock nut. You will want this loose as part of a final adjustment. Repeat with the Passengers side bracket.

You have now completed the tabletop assembly and are ready for installation in the vehicle.



Installation

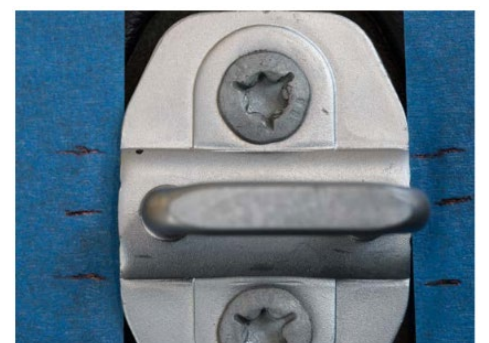
Setup

Fold your fold and tumble seat to its folded upright position.

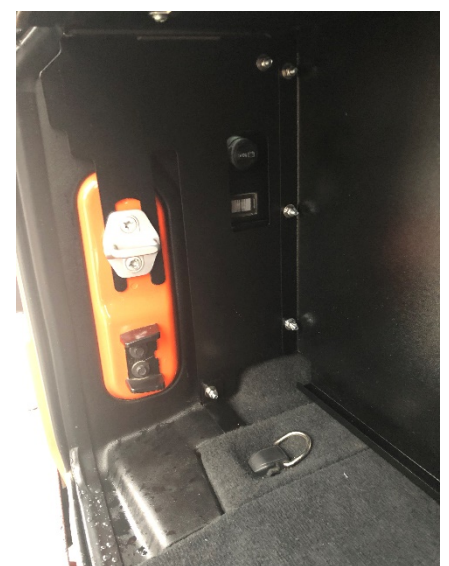
Remove the D-Rings and bolts from the rear D-Ring mounting locations.

Place a strip of masking tape on each side of the latch, mark the factory alignment of the latch on the tape.

Using a T-45 Torx Loosen but do not remove the tailgate latch plate on the tub.

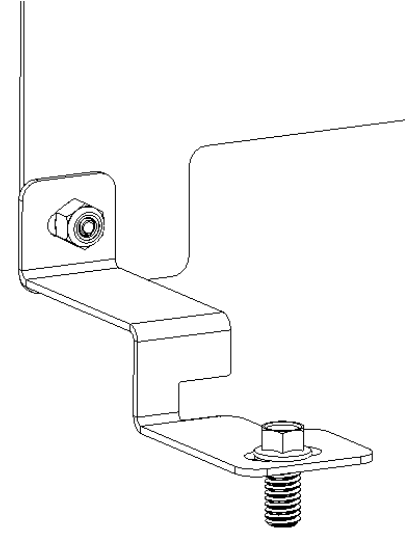


Open your tailgate and place the assembled locker into the jeep sliding the notch in the wall between the latch plate and the tub frame.



MultiBend

Align the Multibend bracket with the rear D-Ring locations and simply re-install the factory D-Ring mounting bolt.



Final Adjustments

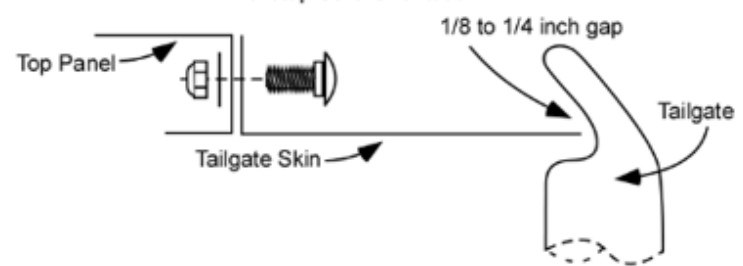
There are only 2 places for adjustment, and that is the tail skin and bumpstops. Once everything else is tightened we can focus on these areas.

Bumpstops

These can slide a little but should be touching the rollbar plastic, you can insert a small piece of foam between the metal and the plastic if you like. You can now tighten them down.

Tail Skin

The tail skin has some vertical adjustment. You will need to align this with your tailgate. The tail skin should fit precisely into the groove on the tailgate. The best way to see this is by slowly closing the tailgate while looking across the jeep. Once closed and latched; use your finger to see if vertical adjustments need to be made and move the tail skin up or down accordingly.



Final Thoughts

Thank you for your purchase of the Diabolical Inc. JL Locker. Please send us pictures once installed and when in use for our website, so others can see it in use. We appreciate any social media promotion you might make and please follow us on Facebook, Instagram, and other outlets.

We value your support and look forward to extending our new products to you as we complete the engineering development and get them through production.

Alan

Owner: Diabolical Inc.